

Painstakingly designed to thrill
Meet the striking, stylish

TARGA 53 OPEN



Every. Perfect. Detail.

Fun never felt this beautiful

“Pure, unadulterated enjoyment”. This is a sentiment that applies to all aspects of the new Targa 53 OPEN – from the visual impact of its bold and beautiful design, to the exhilarating joy one feels as it rises up onto the plane and powers across open waters at full tilt.

In fact, everything about the Targa 53 OPEN has been carefully considered with uninterrupted fun and freedom in mind.

Take for instance the hull, which has been specifically engineered for a smooth, soft ride, and exceptional handling.

Or the open-plan main deck, with its spacious cockpit and retractable hardtop.

Or the large hull windows fearlessly jutting towards the bow and filling each cabin with an abundance of light.

There’s no doubt about it, the Targa 53 OPEN with its muscular power and grace, is both magnificent and thrilling in every way!



Let the good times roll

The new Targa 53 OPEN is a natural-born entertainer. Whether it's a day out with the family, or casual gathering of friends, every element of its generous layout has been purposely handcrafted for a relaxed, open and enjoyable environment.

- **Layout options, including 2 or 3-cabin/2-heads configuration**
- **A spacious cockpit with a wet bar and generous 'U' shaped seating**
- **An oversized aft sunpad that's big enough for at least 4 people**
- **An aft-facing 40" LCD television**
- **Optional gyroscopic stabiliser**
- **A large garage to house a Williams 325 JetRib**
- **A choice of powerful engines:**
 - 2 x Volvo Penta D11-675 shaft drive, diesel with 675mhp each and an estimated maximum speed of 30 knots
 - 2 x Volvo Penta D11-725 shaft drive, diesel with 725mhp each and a maximum speed of 32 knots

TARGA
53 OPEN

INTRODUCTION

MAIN
FEATURES

EXTERIOR
DESIGN

INTERIOR
DESIGN

PRINCIPLE
DIMENSIONS

GENERAL
ARRANGEMENTS

CELEBRATING
50 YEARS

DEALERS


FAIRLINE
YACHTS

From outside the New Targa 53 OPEN exudes grace, style and power

INTRODUCTION

MAIN
FEATURES

EXTERIOR
DESIGN

INTERIOR
DESIGN

PRINCIPLE
DIMENSIONS

GENERAL
ARRANGEMENTS

CELEBRATING
50 YEARS

DEALERS




TARGA
53 OPEN

INTRODUCTION

MAIN
FEATURES

EXTERIOR
DESIGN

INTERIOR
DESIGN

PRINCIPLE
DIMENSIONS

GENERAL
ARRANGEMENTS

CELEBRATING
50 YEARS

DEALERS


FAIRLINE
YACHTS



TARGA
53 OPEN

INTRODUCTION

MAIN
FEATURES

EXTERIOR
DESIGN

INTERIOR
DESIGN

PRINCIPLE
DIMENSIONS

GENERAL
ARRANGEMENTS

CELEBRATING
50 YEARS

DEALERS



TARGA
53 OPEN

INTRODUCTION

MAIN
FEATURES

EXTERIOR
DESIGN

INTERIOR
DESIGN

PRINCIPLE
DIMENSIONS

GENERAL
ARRANGEMENTS

CELEBRATING
50 YEARS

DEALERS



TARGA
53 OPEN

INTRODUCTION

MAIN
FEATURES

EXTERIOR
DESIGN

INTERIOR
DESIGN

PRINCIPLE
DIMENSIONS

GENERAL
ARRANGEMENTS

CELEBRATING
50 YEARS

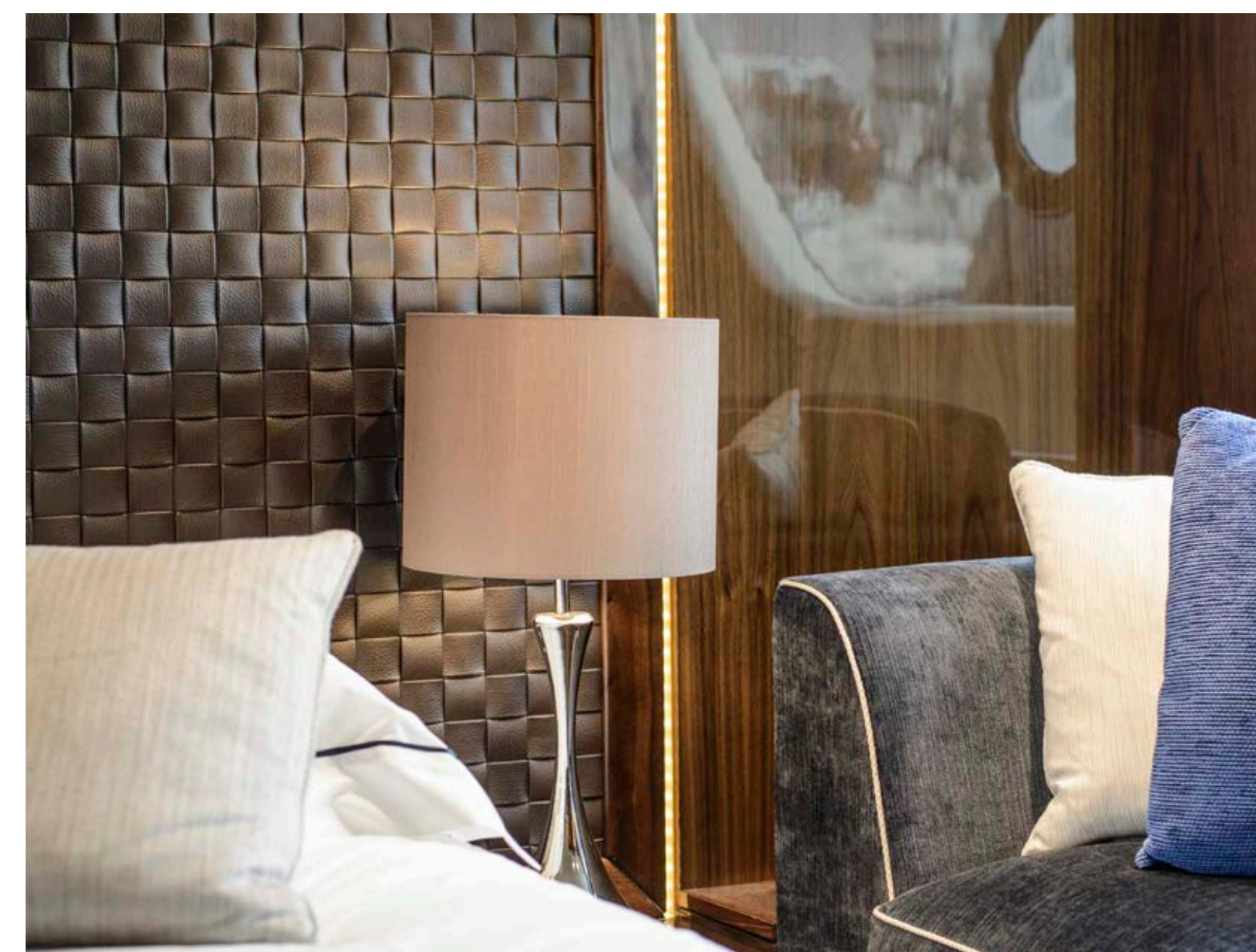
DEALERS


FAIRLINE
YACHTS



And the inside is an equally magnificent experience

This is especially true, given the fact that we have handpicked four beautiful interior design schemes for you to choose from:



AMALFI

Inspired by Liguria's local architecture, this scheme exudes the sunny warmth synonymous with fragrant Italian lemon trees and the umbrella-lined shores of the Amalfi coast.



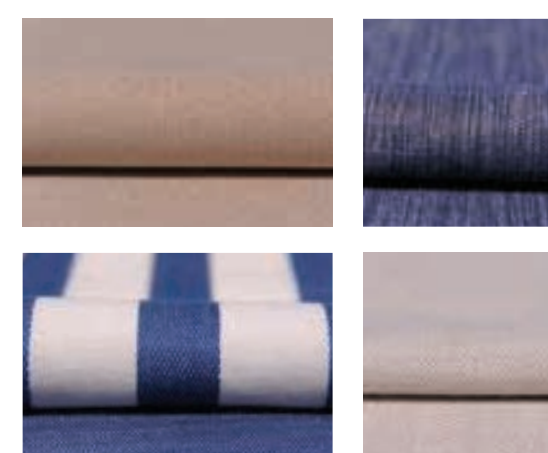
CAPRI

Understated, earthy colours, effortlessly combined with rich natural textures. All the hallmarks of an interior design collection that is as gentle as the Mediterranean breeze.



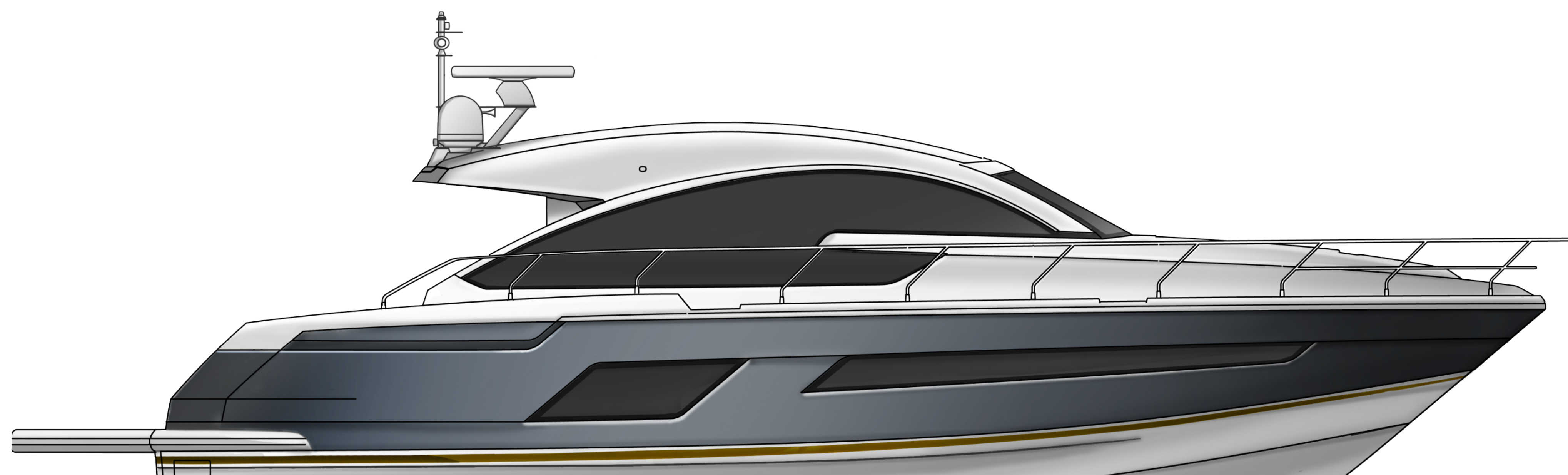
HAMPTONS

Evoking elegant vintage design cues, whilst offering a bold and contemporary interpretation of the luxury that was once the preserve of America's East Coast.



ST. TROPEZ

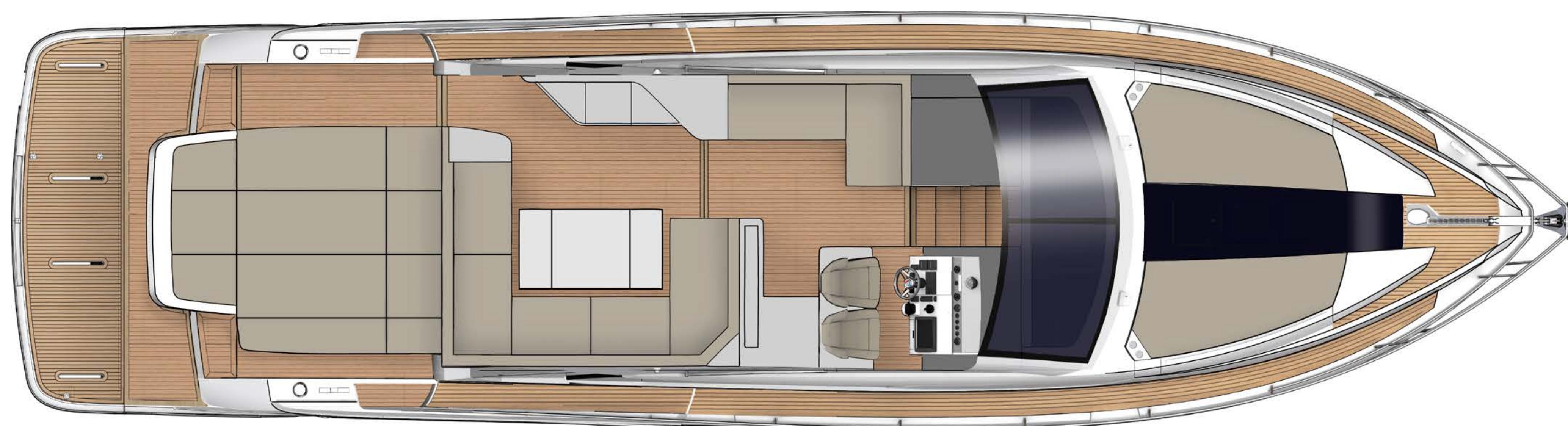
An ode to the sea where all manner of deep, oceanic blues tastefully swirl with muted greys, delicate creams and classic nautical motifs.



Perfectly proportioned in all the right places

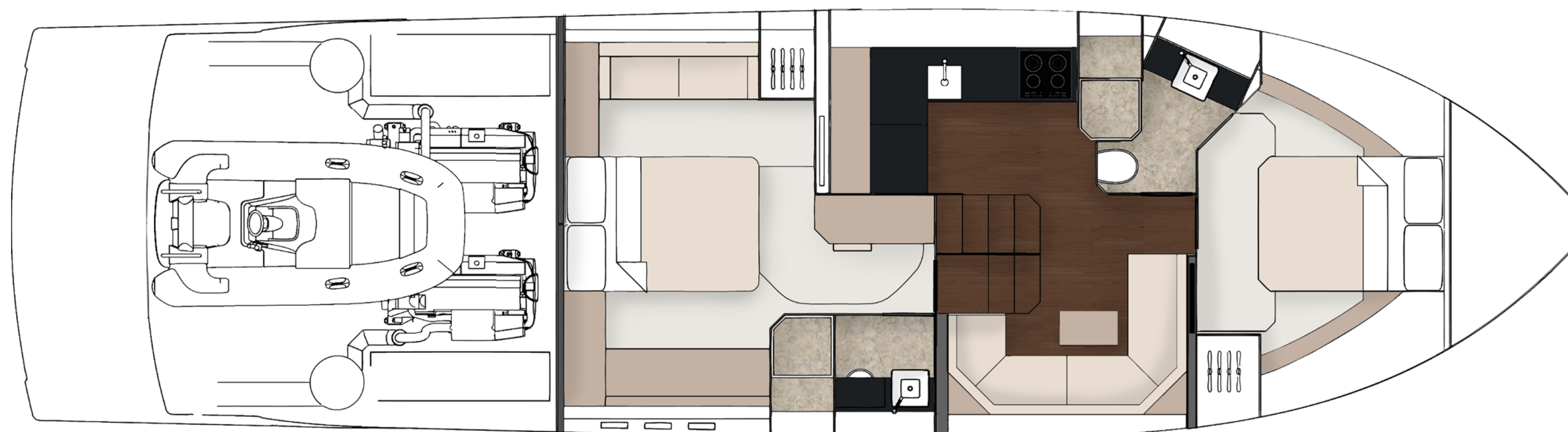
- Length overall (inc. pulpit): 55'6" (16.92m)
- Length overall (exc. pulpit): 53'6" (16.32m)
- Beam (inc. gunwale): 14'10" (4.52m)
- Number of berths: 4 – 6
- Draught: 3'11" (1.20m) unloaded
- Height above waterline (inc. arch & nav. light mast): 15'1" (4.60m)
- Transport height: 15'11" (4.87m)
- Dry weight (approx.): 19.19 imp. tons / 21.49 US tons (19,500kg)
- Fuel capacity: 530 gallons / 637 US gallons (2,412 litres)
- Water capacity (inc. calorifier): 120 gallons / 145 US gallons (550 litres)

[CLICK HERE FOR
FULL SPECIFICATIONS](#)



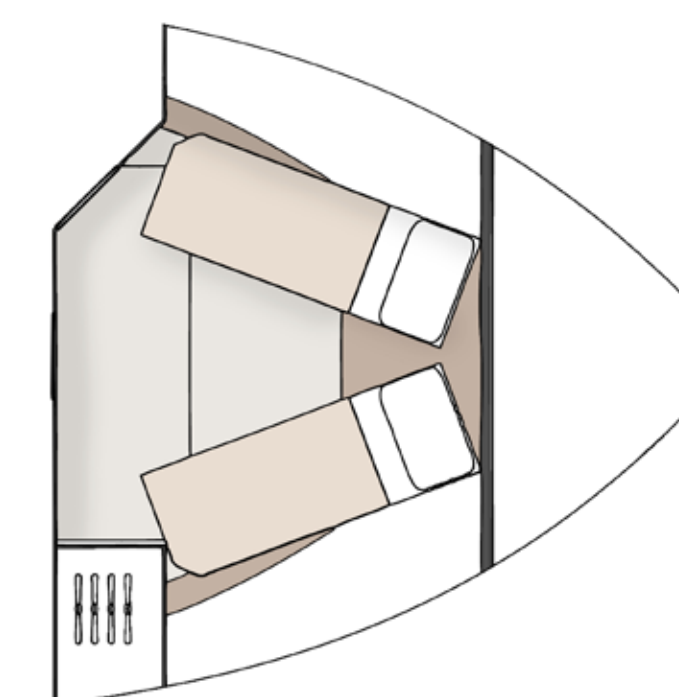
Main Deck

Beautifully finished and spacious, the main deck is where you and your guests can really stretch out and relax in style.

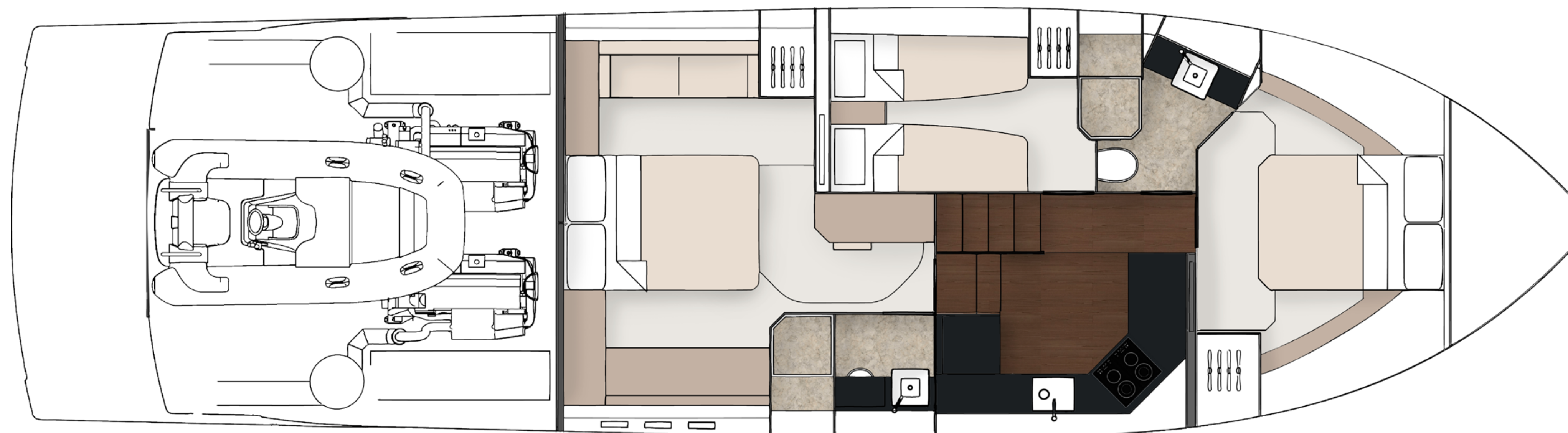


Lower Deck – 2 Cabin

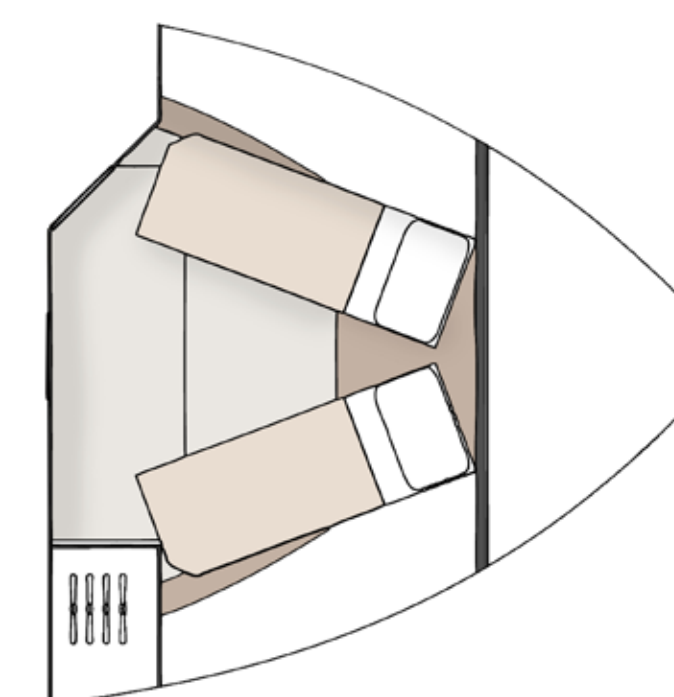
Spacious and airy, the lower deck is fully customisable to suit your needs. You can choose between either a 2 or 3-cabin/2-head configurations.



Forward cabin
scissor berth option



Lower Deck – 3 Cabin



Forward cabin
scissor berth option

Last year we celebrated our 50th anniversary

It was truly a Year Of Golden Moments

It's not enough to build a beautiful boat just for the sake of it. Building the kind of yachts which we are proud to put the Fairline name to, requires something more than just engineering genius or craftsmanship. It also requires the desire to create extraordinary moments for whoever owns it. Moments of joy, exhilaration, excitement...and even tranquility.

With 2017 being our 50th Anniversary, we took every possible opportunity to celebrate those incredible, golden moments since the brand's founder Jack Newington first launched the famous Fairline 19. This included moments like winning the World Yacht Trophy for 2017, becoming a finalist for the Motor Boat of the Year 2018 and being nominated for the European Powerboat of the Year 2018!



INTRODUCTION

MAIN
FEATURES

EXTERIOR
DESIGN

INTERIOR
DESIGN

PRINCIPLE
DIMENSIONS

GENERAL
ARRANGEMENTS

CELEBRATING
50 YEARS

DEALERS

An unrivalled dealership network

Just like the many parts that make up one of our extraordinary yachts, so too are international dealers handpicked and perfectly placed to cover anything and everything you could want from Fairline (you can visit [fairline.com](https://www.fairline.com) for details of your nearest dealer).

Fairline Argentina
Fairline Benelux & W. Germany
Fairline Brazil
Fairline Channel Islands
Fairline Chertsey
Fairline Chesapeake
Fairline Colombia
Fairline Costa Blanca
Fairline Côte d'Azur
Fairline Croatia

Fairline Cyprus
Fairline Denmark
Fairline Eastbourne
Fairline Florida
Fairline Great Lakes
Fairline Greece
Fairline Hong Kong
Fairline Ibiza
Fairline India
Fairline Israel

Fairline Italia
Fairline Japan
Fairline Korea
Fairline Lebanon
Fairline Malta
Fairline Menorca
Fairline Mexico
Fairline Middle East
Fairline Monaco
Fairline New South Wales

Fairline New York
Fairline New Zealand
Fairline North Mallorca
Fairline Poland
Fairline Portugal
Fairline Queensland
Fairline Russia
Fairline Singapore
Fairline South Africa
Fairline South China

Fairline South Mallorca
Fairline Southampton
Fairline Sverige
Fairline Switzerland
Fairline Thailand
Fairline Torbay
Fairline Turkey
Fairline Ukraine
Fairline Victoria
Fairline Western Australia



TARGA 53 OPEN